

4

3

2

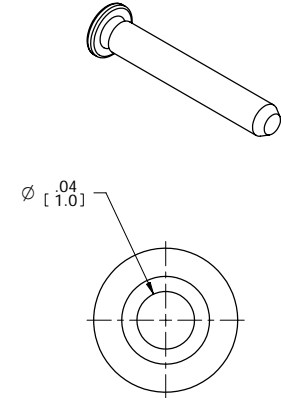
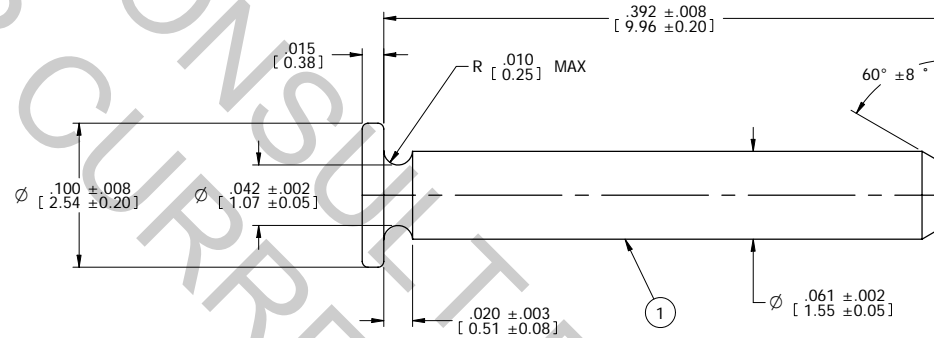
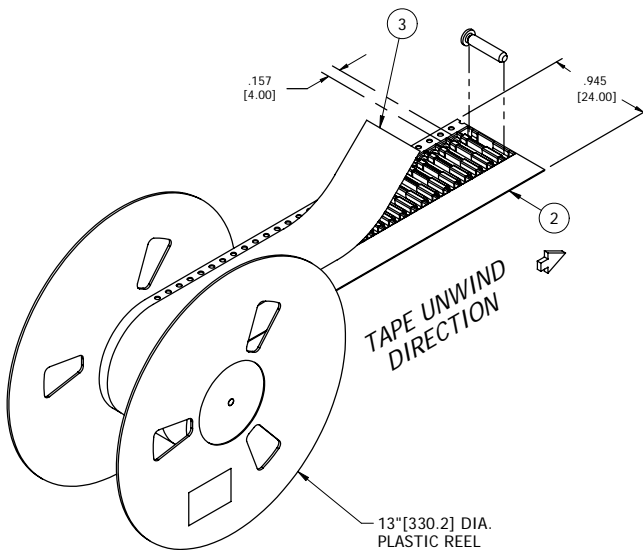
1

NOTES: (UNLESS OTHERWISE SPECIFIED)

- INTERPRET DRAWING IN ACCORDANCE WITH ASME Y14.5-1994.
- TAPE AND REEL PART NUMBERS TO BE SUPPLIED IN TAPE, 5,000 PINS PER REEL.
- TAPE LEADER:** A MINIMUM OF 50 SEALED EMPTY POCKETS.
TAPE TRAILER: A MINIMUM OF 25 SEALED EMPTY POCKETS.
- ALL DIMENSIONS APPLY AFTER PLATING.
- RADII & FILLETS PERMITTED ON ALL CORNERS, NOT TO EXCEED .005 [0.13] MAX.
- SOLDERABILITY & COATING DURABILITY REQUIREMENTS AS DESCRIBED IN IPC/EIA J-STD-002A, TEST METHOD A, COATING DURABILITY CATEGORY 3.
- LOOSE PIECE PINS TO BE SUPPLIED 5,000 PER POLYBAG.

PART NO.	DESCRIPTION
9-0030-01-L	LOOSE, PIECE
9-0030-01-T	TAPE & REEL
9-0030-M1-L	LOOSE, PIECE
9-0030-M1-T	TAPE & REEL

REV	REVISION RECORD	ECN	BY	APVD	DATE
A	RELEASED P/N 9-0030-01-L FOR PRODUCTION	503018	GLT	SH	11/21/03
B	ADDED P/N'S 9-0030-M1-L & M1-T, REVISED AND REDRAWN	504369	BILLT	PVB	02/09/06

 **TAPE AND REEL ORIENTATION****MATERIAL:****1 PIN:**

C14500 TELLURIUM COPPER, ½ HARD TEMPER.

FINISH: POST-PLATED:

O1 = .000300\"-.000500\" [7.62-12.7 MICRONS] MATTE SnPb OVER .000100\"-.000200\" [2.54-5.08 MICRONS] Ni UNDERPLATE.
 M1 = .000300\"-.000500\" [7.62-12.7 MICRONS] MATTE Sn (LEAD FREE) OVER .000100\"-.000200\" [2.54-5.08 MICRONS] Ni UNDERPLATE.

2 TAPE:

ANTI-STATIC, CONDUCTIVE POLYSTYRENE, COLOR: BLACK PER EIA-STD-481

3 COVER TAPE:

ANTI-STATIC, POLYESTER FILM

CUSTOMER DRAWING

TOLERANCES UNLESS OTHERWISE SPECIFIED DIMENSIONS IN INCHES (MILL)	DECIMAL: .XX = ± .01		AutosplICE, Inc. 10121 Barnes Canyon Rd. San Diego, CA 92121-2725 858.535.0077	
	[XX] = ± [0.3]		ENGINEERED BY: G.TOMCZAK	DATE: 6-4-03
	XXX = ± .005		DESIGNED BY: G.TOMCZAK	DATE: 6-4-03
	[XX] = ± [0.13]			
	ANGULAR: ± 1/2°			
THE DRAWING AND THE INFORMATION SET FORTH HEREON ARE THE PROPERTY OF AUTOSPLICE, INC. AND ARE TO BE HELD IN TRUST AND CONFIDENCE. PUBLICATION, DISCLOSURE, OR USE FOR ANY PURPOSE NOT EXPRESSLY AUTHORIZING IN WRITING BY AUTOSPLICE, INC. IS PROHIBITED.		TITLE: SMT NAILHEAD PIN, Ø .061 [1.55]		
DIAMETER	SIZE: C	PART NO: OAE89	DRAWING NUMBER: C9-0030-[]-[]	REVISION: B
	SCALE: 1:1	ECO NO: C9-0030-[]-[]	MODEL NO: 9-0030-01.BW	SHEET 1 OF 1

4

3

2

1